

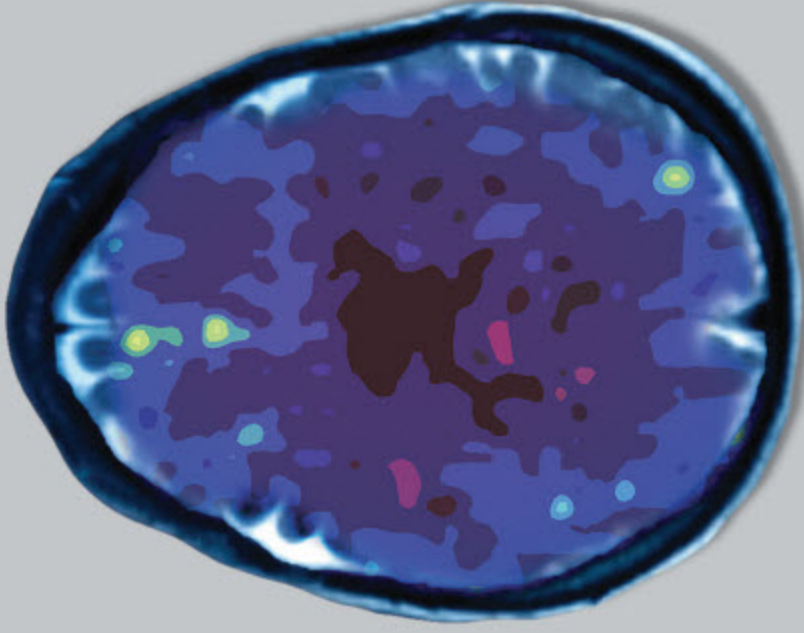
MAJOR DEPRESSIVE DISORDER IS A DISEASE

Brain Activity Is Reduced In Depression

A PET scan measures vital functions such as blood flow, oxygen use and blood sugar (glucose) metabolism.

Source: Mark George, M. D.
Biological Psychiatry Branch
Division of Intramural Research
Programs, NIMH 1993

DEPRESSED



NON-DEPRESSED

